

KEEP COOL FOR THE HOT SHOT DELIVERIES.



THE SUPERIOR QUALITY YOU EXPECT FROM
JOHNSON REFRIGERATED TRUCK BODIES,
NOW AVAILABLE IN A SLIDE-IN BODY!

Because they're from Johnson, these fiberglass-insulated slide-in units stay cooler, cost less to operate and have a higher residual value! Your deliveries get there faster, which means they get there fresher!



A CARLISLE COMPANY

BEVERAGE C-STORE DAIRY DSD FLORAL FOOD SERVICE FROZEN FOOD HOME DELIVERY ICE ICE CREAM MEAT MEDICAL POULTRY PRODUCE SEAFOOD VENDING

THE COOL FUNDAMENTALS

GET THE BODY YOU WANT... FAST!
 Johnson stocks refrigerated truck bodies that are ready for immediate shipment, or get a custom body in as little as eight weeks!



COLD PLATE REFRIGERATION SYSTEM

Cold plate refrigeration systems are fully independent, maintenance free and easily transferable from truck to truck by removing four bolts. Eutectic Holdover Plates can be mounted on the interior ceiling and/or walls. The plates are designed to absorb heat and maintain the product at the proper temperature during the entire delivery run. Holdover plates are designed to freeze at specific temperatures: (+23°F, +18°F, +9°F, 0°F, -9°F, -14°F, -21°F).

• WHAT

The technology of a standard sized Johnson refrigerated truck body shrunk down to a convenient size for shorter routes and hot shot deliveries

• HOW

Features Johnson's exclusive thermal break design and truck body construction to keep shipments colder longer

• WHERE

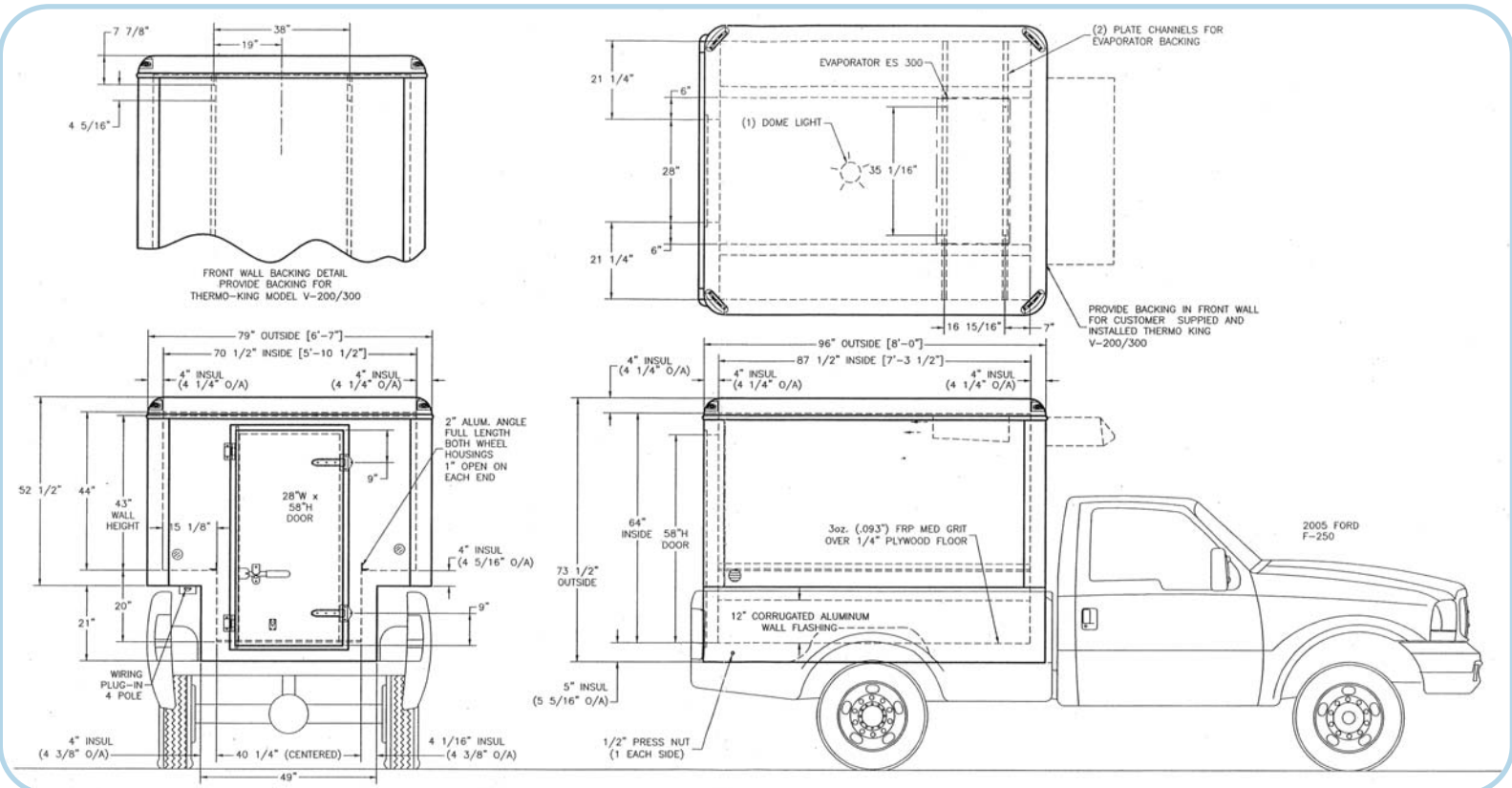
Fits in the back of any standard sized 3/4-ton or 1-ton pick-up truck

• WHEN

Always in stock at Johnson, so they're available for immediate delivery

• WHY

Provides long life durability, low maintenance, and high residual value



WHY FIBERGLASS? WHY NOT ALUMINUM?

The competition's slide-in bodies are constructed with aluminum sheets. Johnson's refrigerated slide-in bodies use fiberglass composite panels instead, to ensure a longer life cycle for the truck body. Here's why:

- Fiberglass truck bodies are 26% more thermally efficient and 896 times more resistant to heat transfer than aluminum.
- With fiberglass, the mechanical blower doesn't have to work as many hours to keep the interior cool, thereby lowering operating costs while extending the life of the mechanical blower unit.
- Aluminum truck bodies use rivets and are susceptible to moisture entry. Moisture creates a freeze-and-thaw expansion and contraction effect in the truck walls. This leads to gaps, air spaces, popped rivets, uneven walls, and decomposition of the foam insulation.
- Fiberglass-insulated bodies use no rivets and are seamless, which makes the bodies impervious to damaging external moisture penetration.
- Fiberglass is more puncture- and tear-resistant than aluminum.

FOR DETAILS CALL 800-922-8360 EXT. 2
 OR VISIT OUR WEBSITE AT WWW.JOHNSONTRUCKBODIES.COM

MAXIMUM THERMAL EFFICIENCY • LOWEST OPERATING COST
 • LONGEST LIFE CYCLE • HIGHEST RESIDUAL VALUE



215 EAST ALLEN STREET • RICE LAKE, WI 54868